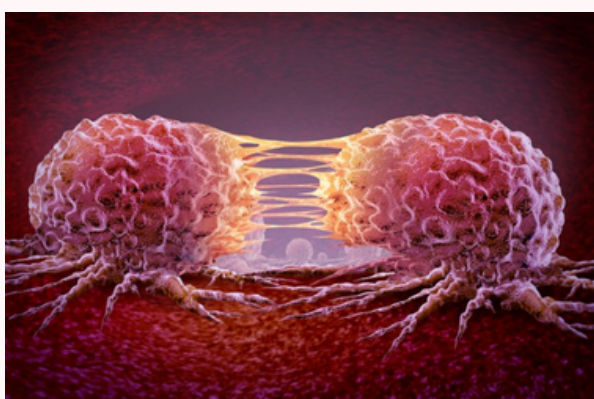


Newsletter



Intoinworld Co., Ltd., a people-focused company.
"From people to people, connecting the value of clinical research."

Intoinworld Co., Ltd. strives to be a bridge of trust between patients, investigators, and sponsors, ensuring that the value of medical innovation is safely delivered to people. Founded in 2015, we are a contract research organization (CRO) that conducts diverse clinical studies across pharmaceuticals, biotechnology, medical devices, investigator-initiated trials (IITs) and observational studies, guided by a people-centered mindset.



Researchers identify new compound targeting drug-resistant metastatic cancer

A Korean research team identified PPS03, a new compound that selectively kills drug-resistant metastatic cancer cells while sparing normal cells. It works by exploiting macropinocytosis, which is more active in metastatic cancer cells, and increasing ROS inside those cells. The findings suggest PPS03 could become a promising new treatment option with fewer side effects and potential clinical value.

Fierce Competition in Pharmaceuticals and Biotech for New Drugs... Changes in the ESG Management Environment Also Attract Attention

In the second week of June, Korea's pharma and biotech sector saw stronger competition for next-generation drug platforms, alongside governance, labor, and policy changes. MASH and ADC licensing expectations also stayed high, showing that innovation and industry restructuring are advancing at the same time.



To launch generic drugs under the flexible pricing contract system, 'understanding actual drug prices is a competitive advantage'

The new flexible pricing contract system is expected to make generic drug market access more complex by widening the gap between listed price ceilings and actual transaction prices. As more drugs adopt flexible contracts, generic developers may face greater difficulty in estimating market size, pricing, and profitability, making real-price verification increasingly important.

Newsletter



Celltrion: "CT-P72/ABP-102 Shows Selective Response to High and Low HER2 Expression Cells"

Celltrion's novel multi-antibody candidate CT-P72/ABP-102 showed selective anticancer activity against HER2-high tumors and promising tolerability in preclinical studies. The results suggest potential across multiple solid tumors, including breast cancer, with evidence of T-cell infiltration and activity in organoid-based models. The company is now moving toward clinical development with FDA patient selection underway.

MFDS and EMA Complete First Joint Review of Antibody Drug Amendment Approval

The MFDS has completed its first joint international review of a biopharmaceutical post-approval change together with the EMA, marking a significant step in supporting the global expansion of Korean pharma and biotech companies. By aligning review requirements across multiple regulators, the process could reduce the burden of preparing separate materials for each market. The move also reflects Korea's growing role in international regulatory cooperation.



19 Domestic Pharmaceutical Companies 'Thirsty' for Next-Generation Growth Engines Including ADCs, TPDs, and Bispecific Antibodies

Demand from major Korean pharma companies is increasingly concentrated on next-generation platform technologies such as ADCs, TPD, bispecific antibodies, and AI-based drug discovery. This suggests open innovation is shifting away from improved drugs and generics toward securing high-value pipelines and enabling platforms. The trend highlights a broader move from simple candidate acquisition to long-term technology competitiveness.

